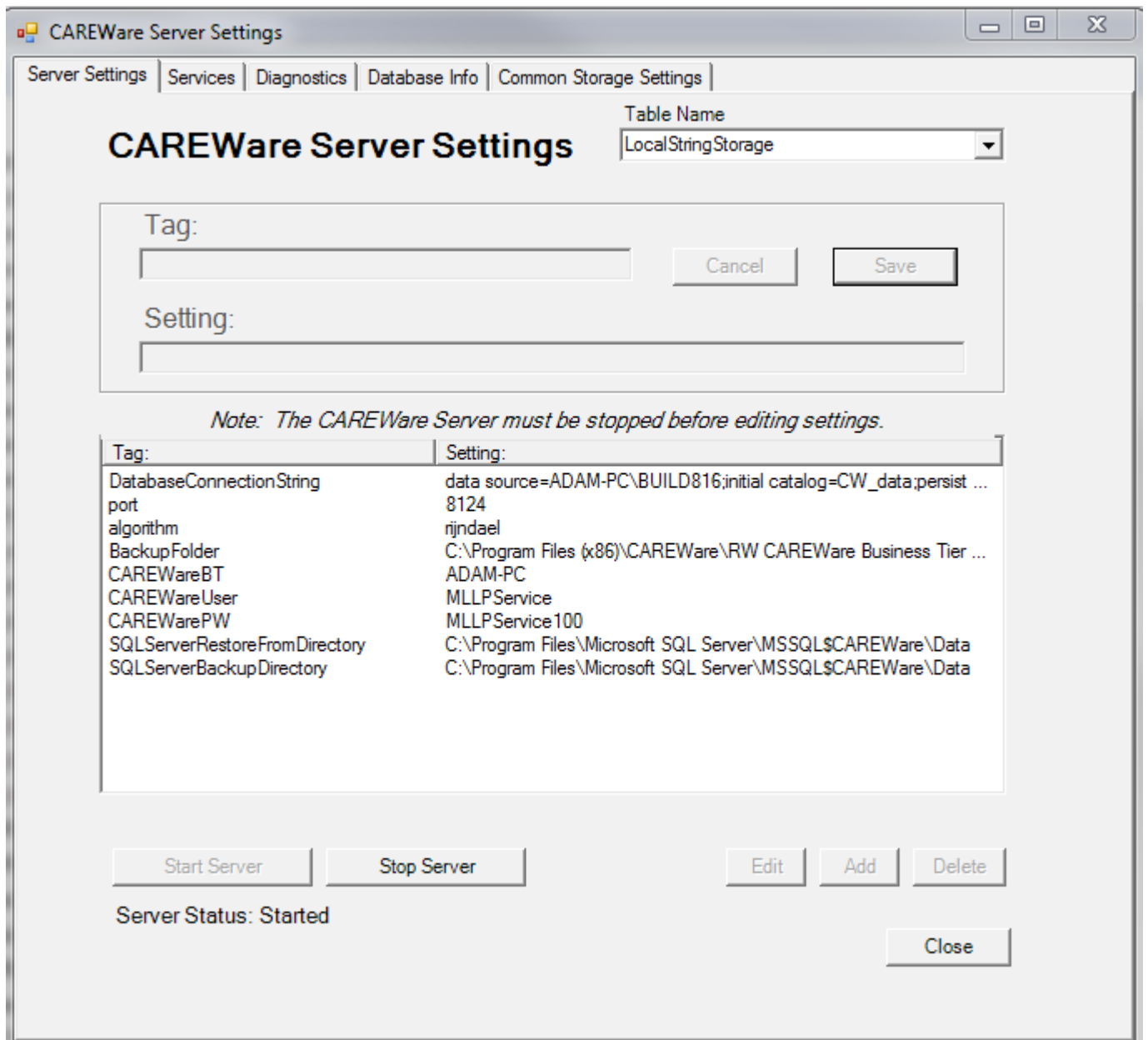


The CAREWare business tier connects to the database using a database connection string setting stored in the BusinessTierSetting.xml file. This setting can be adjusted by using the CW Admin utility or by editing the BusinessTierSettings.xml file.

The CW Admin utility can be used to edit the database connection string and test the connection between the business tier and the database. The CW Admin utility is located at C:\Program Files (x86)\CAREWare\RW CAREWare Business Tier\CW Admin by default. To open the utility, right click *CW Admin* and click *Run as Administrator*.



Once the CW Admin utility is open, click *Stop Server*.

Click the database connection string to highlight it and click *Edit*.

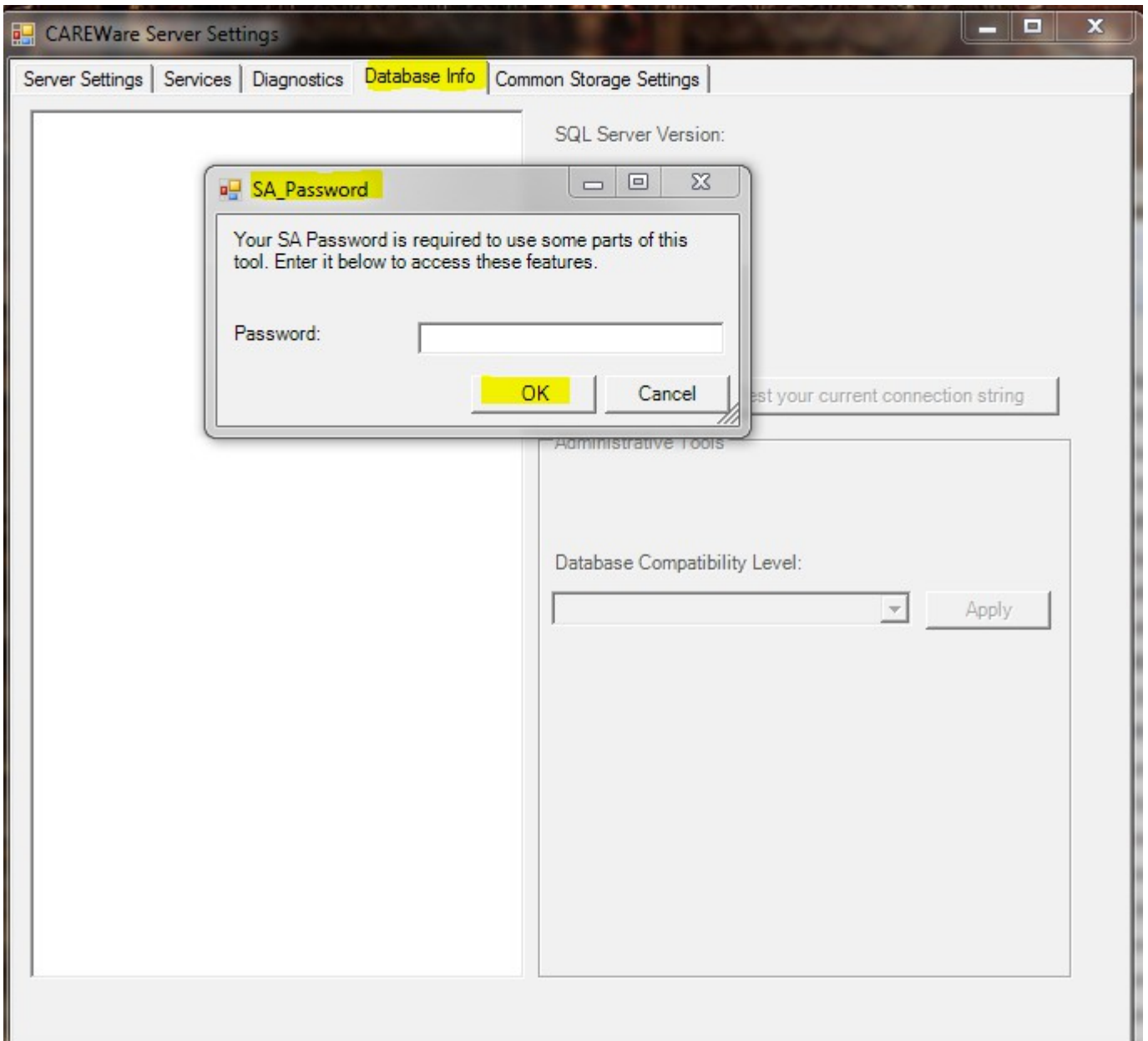
Setting:

data source=ADAM-PC\TEST2012;initial catalog=CW_data,persist security info=False,user id=cwbt,pass

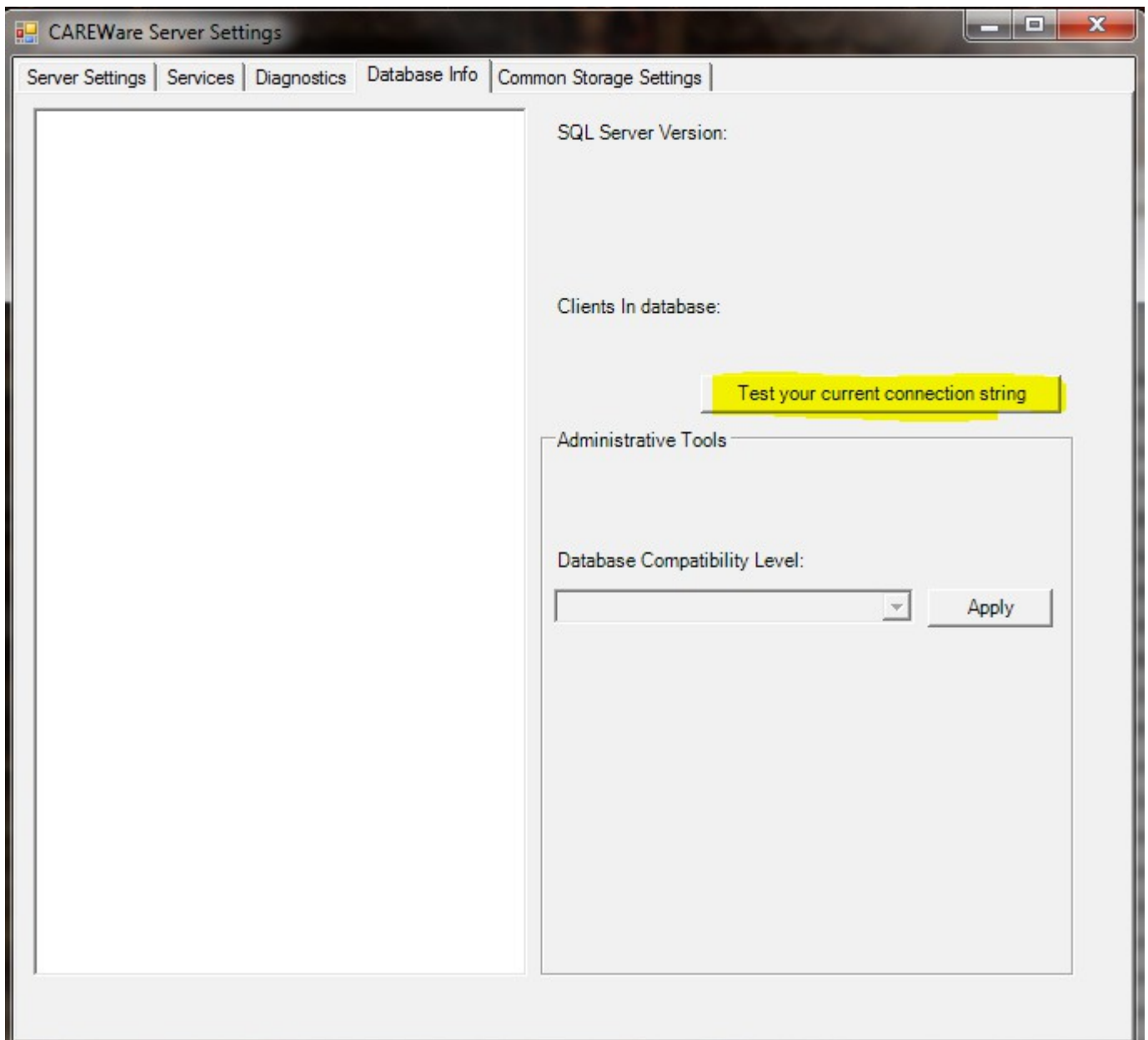
Once the database connection string has been edited, click *Save*, and then click *Start Server*.

Tag:	Setting:
DatabaseConnectionString	data source=ADAM-PC\TEST2012;initial catalog=CW_data,persist ...
port	8124
algorithm	rijndael
BackupFolder	C:\Program Files (x86)\CAREWare\RW CAREWare Business Tier ...
CAREWareBT	ADAM-PC
CAREWareUser	MLLPService
CAREWarePW	MLLPService100
SQLServerRestoreFromDirectory	C:\Program Files\Microsoft SQL Server\MSSQL\$CAREWare\Data
SQLServerBackupDirectory	C:\Program Files\Microsoft SQL Server\MSSQL\$CAREWare\Data

To test the database connection string, click the *Database Info* tab. Enter the SA password for the database.



Click *Test your current connection string*.



If there is an error, type the error message in the search window for the Jprog.com/wiki search field to search for solutions.

The default file path for the BusinessTierSettings.xml file is C:\Program Files (x86)\CAREWare\RW CAREWare Business Tier\BusinessTierSettings.xml. This file can be edited using notepad or another text document application. Make sure the data source is the (server name\database instance name). The default password for the cwbt login account is CWtemp100%. Once the database connection string is corrected, save the file and restart the business tier. The database connection can be tested using the CW Admin utility.

```
<description>EncryptPIIFields</description>
<value>1</value>
</local_number_storage>
<local_number_storage>
  <description>BusinessTierConnectionPooling</description>
  <value>1</value>
</local_number_storage>
<local_number_storage>
  <description>LogUserAndSQLErrors</description>
  <value>1</value>
</local_number_storage>
<local_string_storage>
  <description>DatabaseConnectionString</description>
  <value>data source=ADAM-PC\CAREWare;initial catalog=CW_data;persist security info=Fa
</local_string_storage>
<local_string_storage>
  <description>port</description>
  <value>8124</value>
</local_string_storage>
<local_string_storage>
  <description>algorithm</description>
  <value>rijndael</value>
```