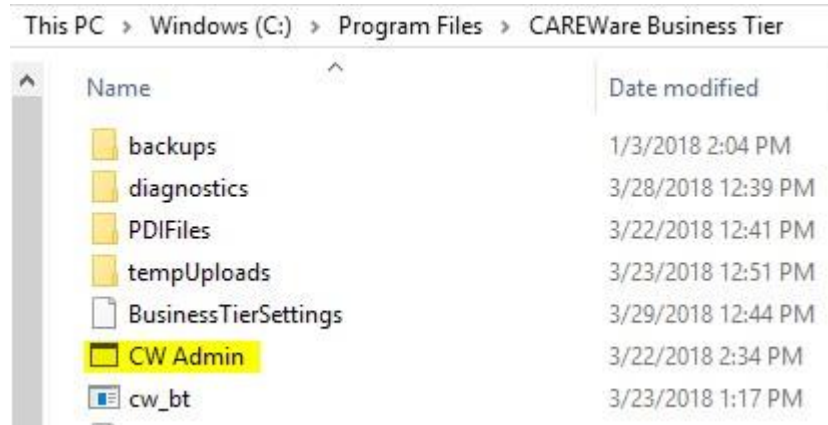


The CW Admin Utility is the interface for the business tier settings. The CW Admin Utility is where Administrators can set the connection between the business tier and database, test the connection, adjust HL7 Interface settings, read diagnostics files, and set many other CAREWare options.

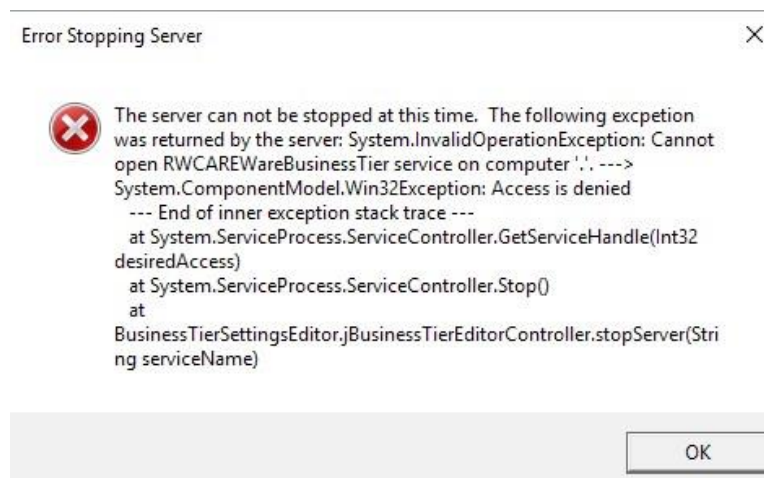
The default location for the CW Admin Utility is C:\Program Files\CAREWare Business Tier.



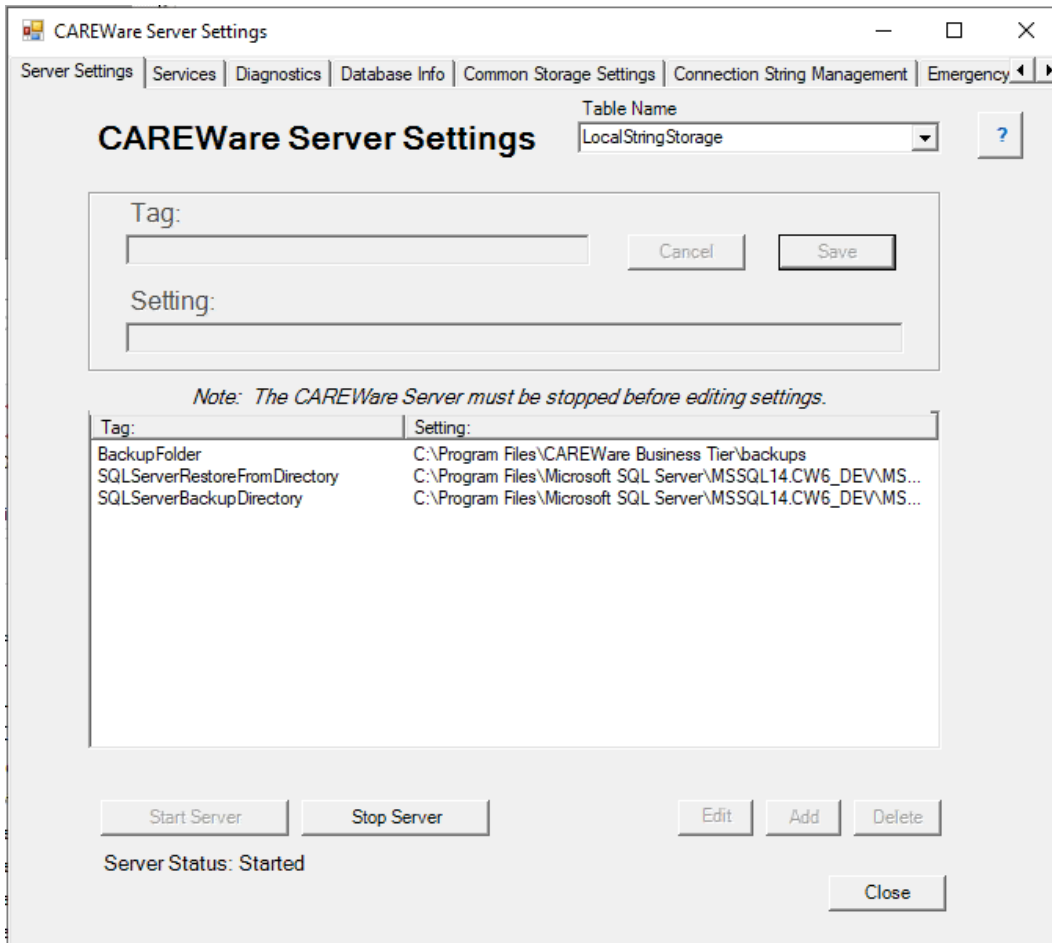
To run the CW Admin Utility follow these instructions:

1. Go to C:\Program Files\CAREWare Business Tier.
2. Right click *CW Admin*.
3. Click *Run as Administrator*.

Note: The CW Admin Utility must always be run as administrator, even if the user is logged into a Windows Administrative account. If the CW Admin Utility is run without choosing Run as Administrator, the following error will occur when the RW CAREWare Business Tier service is stopped.



Server Settings shows the current settings set for the business tier, allows for editing of several business tier settings, and provides access to start and stop the business tier service.



To start or stop the business tier service: Click *Start Server* or *Stop Server*.

**Tag** – Name of CAREWare Business Tier Setting.

**Setting** – Location where files are stored for that setting.

**Table Name** – CAREWare Business Tier Setting type.

**LocalStringStorage** – Text type CAREWare Business Tier Settings. (E. g. BackupFolder, SQLServerRestoreFromDirectory, or SQLServerBackupDirectory.)

**LocalNumberStorage** – Numeric type CAREWare Business Tier Settings. (E. g. UserTimeout, errorLogsToKeep, or query Timeout.)

**LocalDateStorage** – Date type CAREWare Business Tier Settings.

**Start Server** – Starts the CAREWare Business Tier Service.

**Stop Server** – Stops the CAREWare Business Tier Service.

**Edit** – Allows users to make changes to a setting.

**Add** – Allows users to add a new setting.

**Delete** – Allows users to remove a setting.

**Backup Folder** – Where the CAREWare Business Tier Settings and database encryption files are stored as backup.

**SQLServerRestoreFromDirectory** – Where CAREWare allows users to select a backup file when restoring the database in the user interface.

**SQLServerBackupDirectory** – Where CAREWare writes new backup files when users backup the database in the user interface.

Once changes are complete for settings, start the service by clicking *Start Server*.

To add a setting:

1. Select a *Table Name*.
2. Click *Stop Server*.
3. Click *Add*.
4. Enter a value for *Tag*.
5. Edit the value for *Setting*.
6. Click *Save*.

To delete a setting:

1. Select a *Table Name*.
2. Click *Stop Server*.
3. Click *Delete*.

To edit a setting:

1. Select a *Table Name*.
2. Click *Stop Server*.
3. Click the setting *Tag*.
4. Click *Edit*
5. Edit the value for *Setting*.
6. Click *Save*.

CAREWare Server Settings

Server Settings | **Services** | Diagnostics | Database Info | Common Storage Settings | Connection String Management

## Services

Below is a list of all SQL Server Instances found on your system. To use CAREWare both the database service and CAREWare Business Tier service must be running.

Service Name	Status
MSSQL\$CAREWARE	Running
MSSQL\$SQLEXPRESS	Stopped
MSSQL\$SQLEXPRESS01	Stopped
MSSQL\$CAREWARE6V4	Running
MSSQL\$CW6V4SECOND	Running
MSSQL\$CW6SETUPTEST3	Running
CAREWare Business Tier Service	Running
CAREWare HTTP Server	Running

Start Service      Stop Service

The Services tab lists all CAREWare services, allowing users to start and stop those services here. If there are multiple database instances, they are listed here.

The diagnostics tab provides a view of diagnostics files created by running the business tier diagnostics in the client tier application. Click [here](#) to review instructions for running the diagnostics application.

**CAREWare Server Settings**

Server Settings | Services | **Diagnostics** | Database Info | Common Storage Settings | Connection String Management

**Diagnostics Files:**

Diagnostics Files:

- diagnostics\3\_28\_2018\_16\_00.txt
- diagnostics\3\_26\_2018\_11\_00.txt

Show Diagnostics

Delete File

Refresh List

**Diagnostic Info**

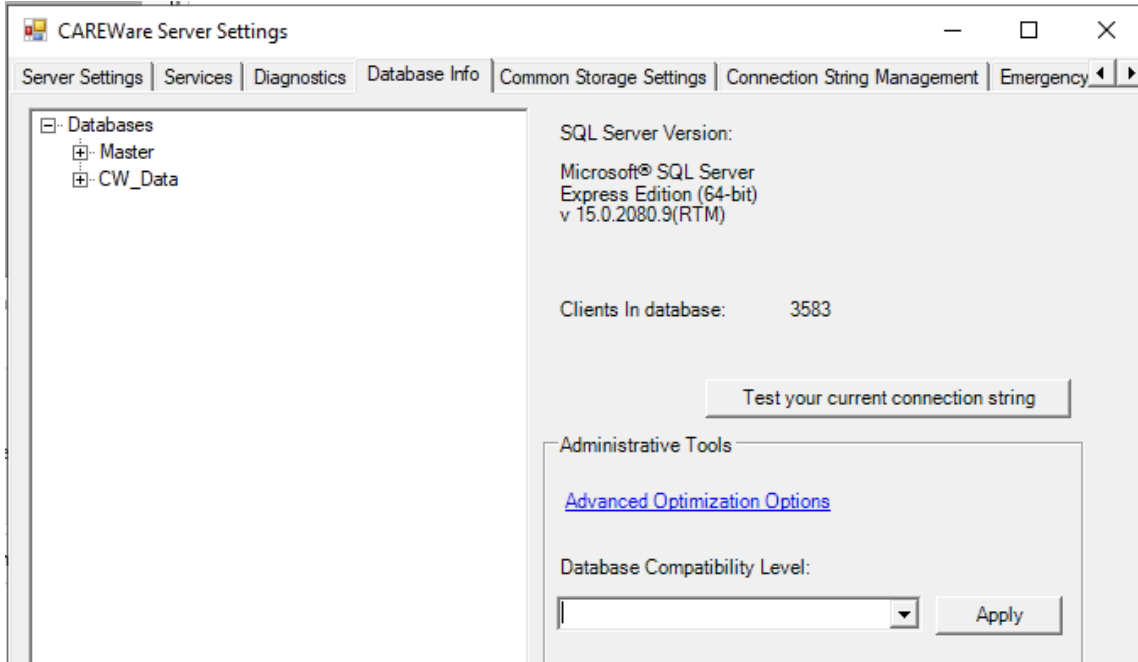
Total Clients: 4013      Free Disk Space (KB): 110287116      Ticks/ms: 10000

System Memory (MB): 8067      Memory in use (KB): 696152      User: [Dropdown]

Method Name:	Start Time:	Total Time (...)	Number of e...	Method Time...	Decryption T...	Encryption Ti...
	4:35:35 PM	0	9	0	0	0.998
	4:35:38 PM	0	141	0	0	0
	4:35:38 PM	0	83	0	0	0
DOC_Get_Do...	4:35:39 PM	2.0013	11	2.0013	0	0
DOC_Get_Do...	4:35:39 PM	12.0083	12	12.0083	0	0
SRV_Show_S...	4:35:39 PM	13.0086	11	13.0086	0	0
VS_Show_Sh...	4:35:39 PM	9.0056	11	9.0056	0	0
CUST_Show_...	4:35:39 PM	7.0046	11	7.0046	0	0
CN_Show_Sh...	4:35:39 PM	6.004	11	6.004	0	0
CRO_Get_Use...	4:35:39 PM	8.005	20	8.005	0	0
CRO_List_Are...	4:35:39 PM	4.0033	12	4.0033	0	0
OnTick	4:35:41 PM	291175.4082	40	291175.4082	0	0
ADM_PA_Get...	4:35:43 PM	10.0067	21	10.0067	0	0
RPT_Get_Can...	4:35:43 PM	7.0059	12	7.0059	0	0
CRR_Get My...	4:35:43 PM	8.0074	11	8.0074	0	0

View Events

The Database Info tab is used to test the connection between the database and the business tier. The Database Info tab shows database users, roles, and databases in the SQL Server Database Instance. The Database Info tab includes an option for adjusting the Database Compatibility Level. If there is an error in roles for the cwbt login, a *Resolve* button will appear to resolve the issue.



**Databases** – Lists databases in the CAREWare instance. (E. g. cw\_data, cw\_attachments, or cw\_pdi)

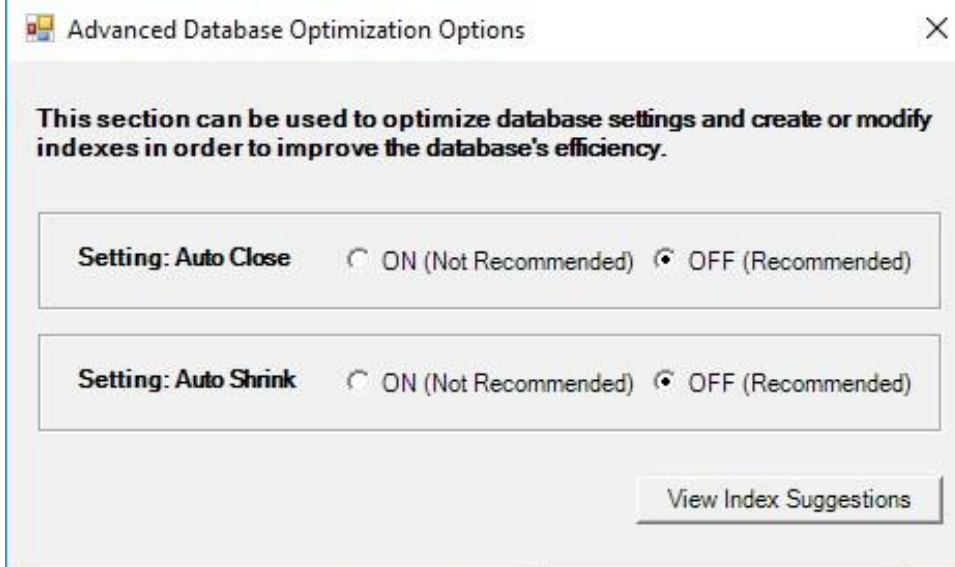
**Clients in Database** – Displays the total number of clients in the database.

**SQL Server Version** – Displays the version of SQL installed for the instance.

**Test your current connection string** – Used to check the connection for the CAREWare Business Tier to the CAREWare database.

**Advanced Optimization Options** –Updates indexing in the database to improve performance.

**Database Compatibility Level** –Sets the compatibility of the database to a different SQL Server Version. It is ideal to select the latest version of SQL.



**Auto Close** – When the last user exits the database, the database is shut down cleanly and resources are freed (Recommended to remain off as this may degrade performance.).

**Auto Shrink** – If this setting is set to *ON*, SQL Server removes unused space from the database on a periodic basis (Recommended to remain off as this may degrade performance.).

**View Index Suggestions** – Produces queries that can improve indexes in CAREWare to improve performance.

Note: View Index Suggestions includes the option to execute all of the suggestions or save the script so a DBA can review the queries and run the chosen queries using SQL Server Management Studio.

Index Suggestion Results

Descriptions of the detected index suggestions are listed in the box below. Use the controls at the bottom of the dialog to either create all suggested indexes or to save a SQL script for creating them later from Microsoft SQL Management Studio.

- Convert the primary key index for the cw\_act\_program\_rft table to a clustered index.
- Convert the primary key index for the cw\_action table to a clustered index.
- Convert the primary key index for the cw\_action\_class table to a clustered index.
- Convert the primary key index for the cw\_active\_diagnosis\_map table to a clustered index.
- Convert the primary key index for the cw\_active\_ext\_provider\_map table to a clustered index.
- Convert the primary key index for the cw\_active\_medication\_map table to a clustered index.
- Convert the primary key index for the cw\_adap\_brand table to a clustered index.
- Convert the primary key index for the cw\_adap\_formulary table to a clustered index.
- Convert the primary key index for the cw\_adap\_generic\_drug table to a clustered index.
- Convert the primary key index for the cw\_adap\_indication\_rft table to a clustered index.
- Convert the primary key index for the cw\_adap\_ingredient table to a clustered index.
- Convert the primary key index for the cw\_adap\_map table to a clustered index.
- Convert the primary key index for the cw\_adap\_ndc table to a clustered index.
- Convert the primary key index for the cw\_adap\_quarter table to a clustered index.
- Convert the primary key index for the cw\_adap\_report table to a clustered index.
- Convert the primary key index for the cw\_agency\_funding\_rft table to a clustered index.
- Convert the primary key index for the cw\_agency\_type\_rft table to a clustered index.
- Convert the primary key index for the cw\_annual\_custom table to a clustered index.
- Convert the primary key index for the cw\_annual\_review table to a clustered index.
- Convert the primary key index for the cw\_app\_imm\_map\_definition table to a clustered index.
- Convert the primary key index for the cw\_app\_map\_immunization table to a clustered index.
- Convert the primary key index for the cw\_app\_map\_service table to a clustered index.
- Convert the primary key index for the cw\_app\_map\_subservice table to a clustered index.
- Convert the primary key index for the cw\_app\_map\_test table to a clustered index.
- Convert the primary key index for the cw\_app\_map\_vital\_signs table to a clustered index.
- Convert the primary key index for the cw\_app\_test\_map\_definition table to a clustered index.
- Convert the primary key index for the cw\_appointment table to a clustered index.
- Convert the primary key index for the cw\_appointment\_purpose\_rft table to a clustered index.
- Convert the primary key index for the cw\_appointment\_status\_rft table to a clustered index.
- Convert the primary key index for the cw\_appointment\_type\_rft table to a clustered index.
- Convert the primary key index for the cw\_art\_prescribed\_rft table to a clustered index.
- Convert the primary key index for the cw\_art\_type\_rft table to a clustered index.

Execute All    Save SQL Script    Close

The Common Storage Settings tab is a link to the Common Storage Settings table in the database. It contains many settings for CAREWare, including HL7 Interface settings, the version of the database, an option to reset and unlock users, the database connection string for attachments. [Here](#) is a list of the Common Storage Settings in Excel.

cmm_st_pk	cmm_st_text	cmm_st_date	cmm_st_number
▶ Data TierVersion			96.6
BusinessTierVersi...			
versionTypeLevel			0
firstNamePart			2
secondNamePart			0
thirdNamePart			1
firstPunctuation	,		
secondPunctuation			
firstNameSortPart			2
secondNameSort...			0
thirdNameSortPart			1
longTimerLastEla...		3/30/2018 12:59...	
RegimenRebuilding			1
vietnameseVersion	0		
cultureSettingString	en-US		
EncryptFmwrk	4.0		
PIIFieldsEncrypted			1
reportTimeout			180
logChanges			0
ResetLockoutAn...			
LastExpiredPass...		3/26/2018	



Connection String Management allows users to set the business tier to database connection, encrypt the settings, and test the connection.

The screenshot shows the 'Connection String Management' tab in the 'CAREWare Server Settings' application. The dialog box contains the following fields and controls:

- Server Address:** CWHD1\CW6SETUPTTEST3
- Database Name:** CW\_Data
- SQL Login ID:** cwbt
- Password:** [Hidden with asterisks]
- Show:** Button to toggle password visibility.
- Encrypt In Settings File:**  checkbox.
- Test Connection:** Button.
- Save:** Button.
- Cancel:** Button.

Below the input fields is a table with two columns: 'Connection String Identifier' and 'Encrypted'.

Connection String Identifier	Encrypted
DatabaseConnectionString	No

An 'Edit Selected' button is located at the bottom right of the table area.

**Server Address** – The name of the PC/Server where the CAREWare database instance is installed and the name of the CAREWare database instance.

**Database Name** – The name of the CAREWare database in the SQL database instance.

**SQL login ID** – The SQL login that is the database owner for cw\_data.

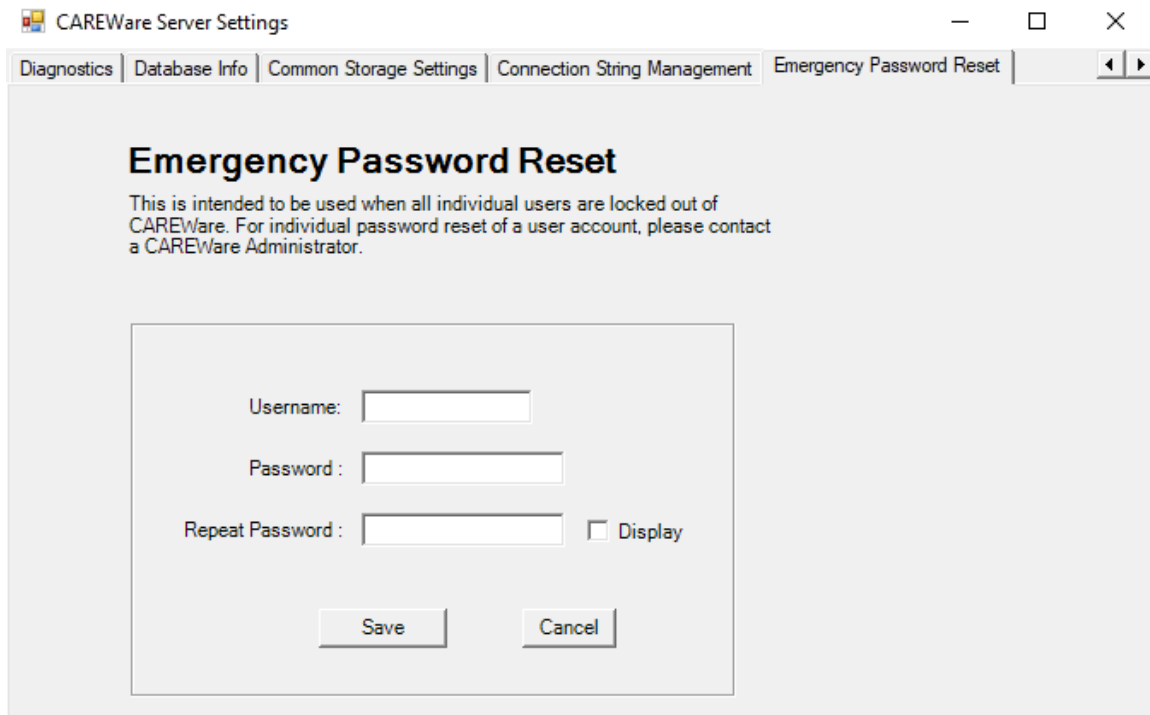
**Password** – The password for the SQL login ID.

**Show** – Displays the hidden password for the login.

**Encrypt In Settings File** – When checked the database connection string is encrypted in the BusinessTierSettings.xml file.

**Test Connection** – Tests the connection between the CAREWare business tier and the CAREWare database.

**Save** – Saves changes to the database connection string.



Emergency Password Reset is used to unlock any account while setting a new temporary password. Users are prompted to enter a new password once they attempt to log in with the temporary password.