

XML Cloning Tool

June 10, 2006

Jeff Murray's Programming Shop, Inc. (jProg)

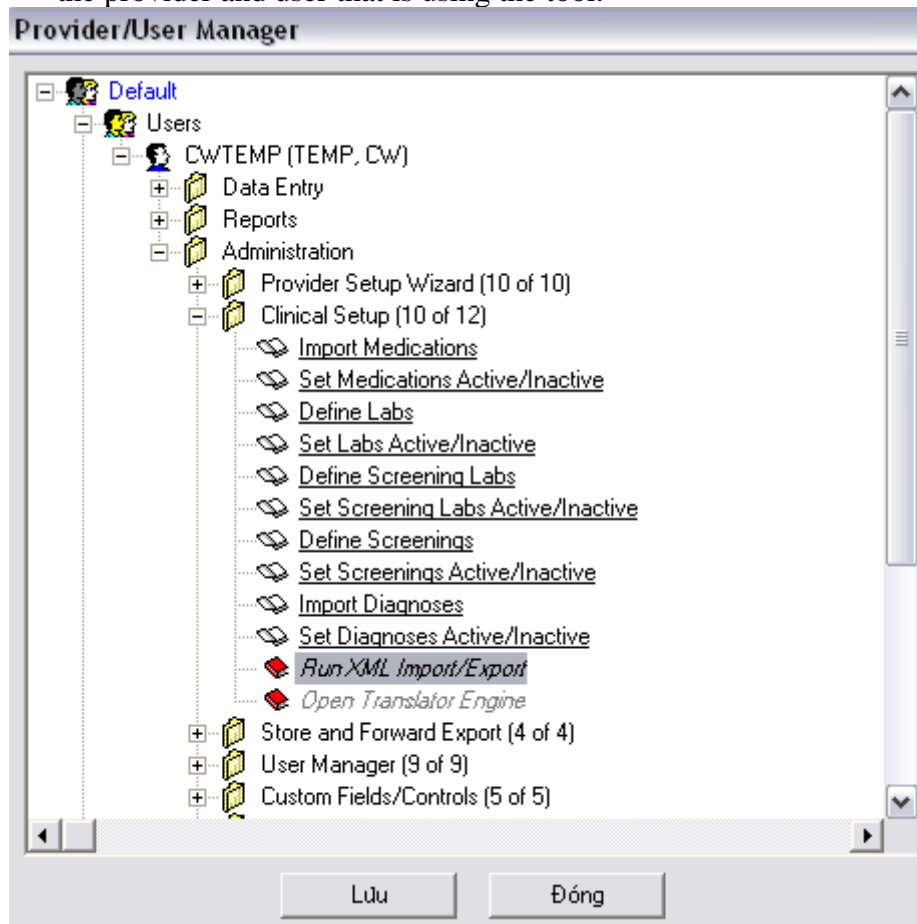
Using the tool:

The xml cloning tool allows the setup from one provider to be exported and imported into another provider's database. This tool will transfer the following types of data:

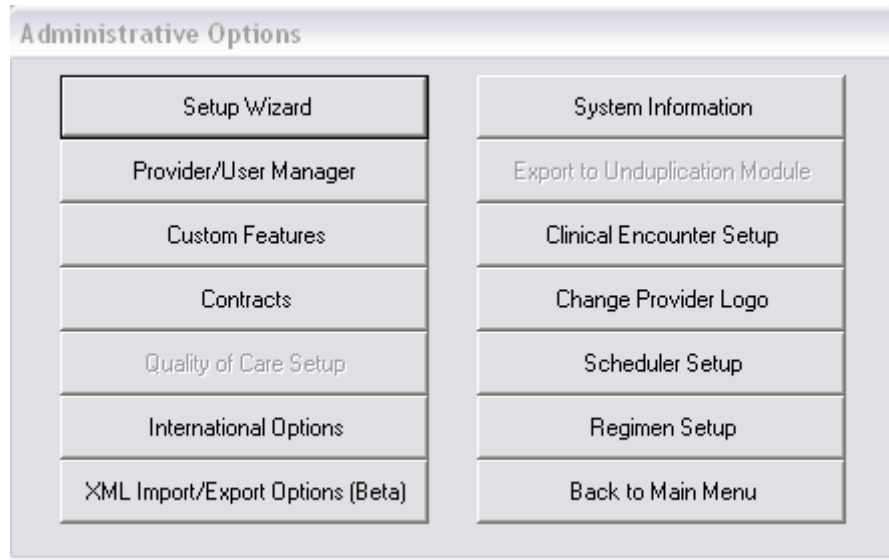
- Custom Reports
- Custom Fields
- Geographic entities
- Appointment purpose
- Subservice Definitions
- Education Level
- HIVQUAL Mapping
- RFT Translations

The process of exporting and importing will be very simple. Below is a step by step walk through of the process.

- 1) Before running the import/export, appropriate permissions must be granted to the provider and user that is using the tool.



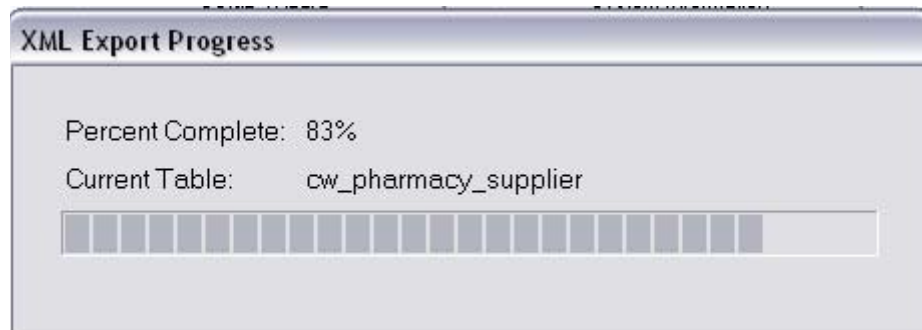
- 2) Once you have the required permissions, the export can be run by clicking XML Import/Export Options located on the Administrative Options Menu.



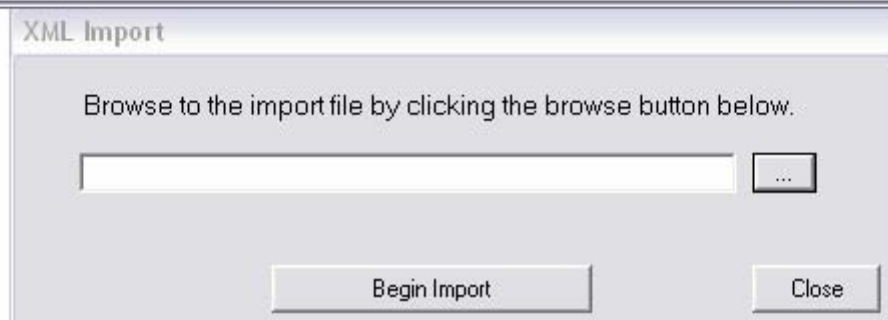
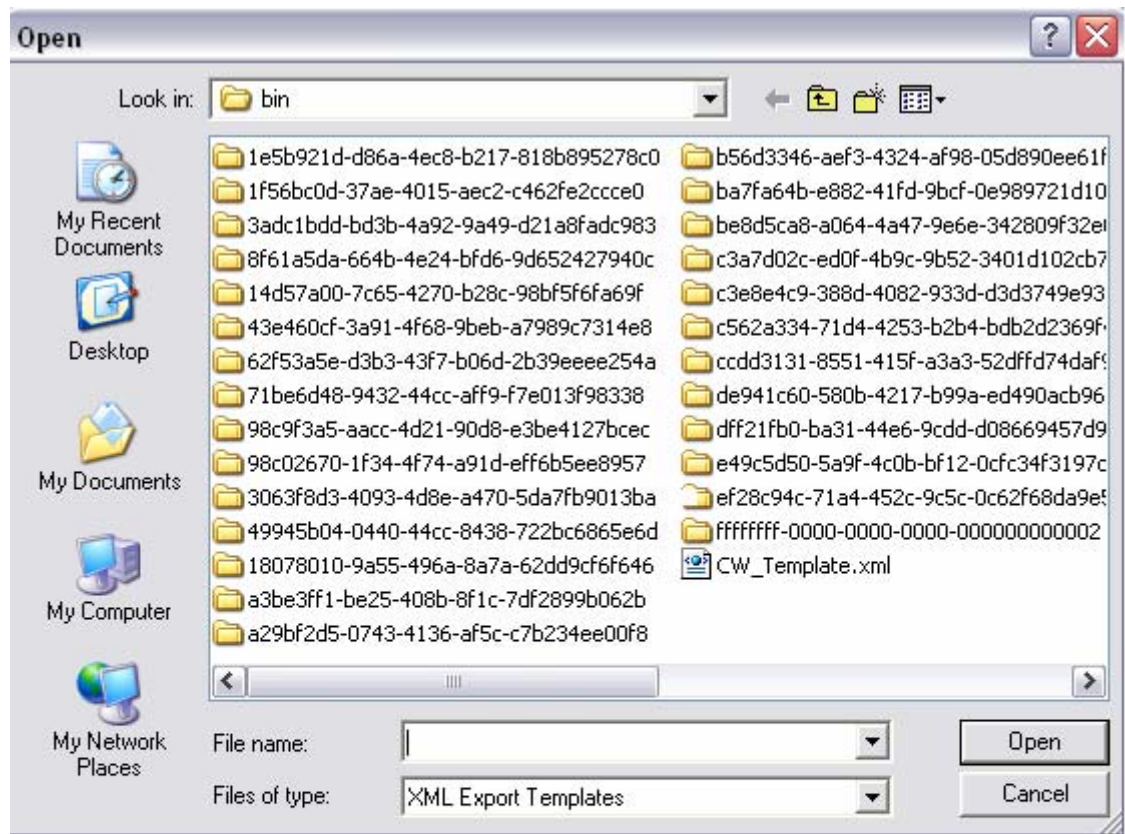
- 3) To run the export, click the Run Export button. This will create a file named cw_template.xml and save it in the CAREWare client folder (C:/Program Files/CAREWare/RW CAREWare Client Tier/)



- 4) A progress screen will appear to show the current status of the export. The exporting process will be complete when the progress window disappears. A message will appear to let you know that the export completed successfully



- 5) The export is complete. Now you can take the newly created xml file (cw_template.xml) and import it into other providers databases.
- 6) To import the template file, first place the file in the CAREWare client tier folder on another providers computer.
- 7) Next, click the Import Existing Template Options, located on the XML Template Options Menu above.
- 8) Browse to the appropriate folder to locate the template file. Select the file and click open.



- 9) Click **Begin Import** to start the importing process. A progress bar (as shown above) will appear to show the status of the import. Once the import is complete, you must reconnect to CAREWare to see the newly imported data.