

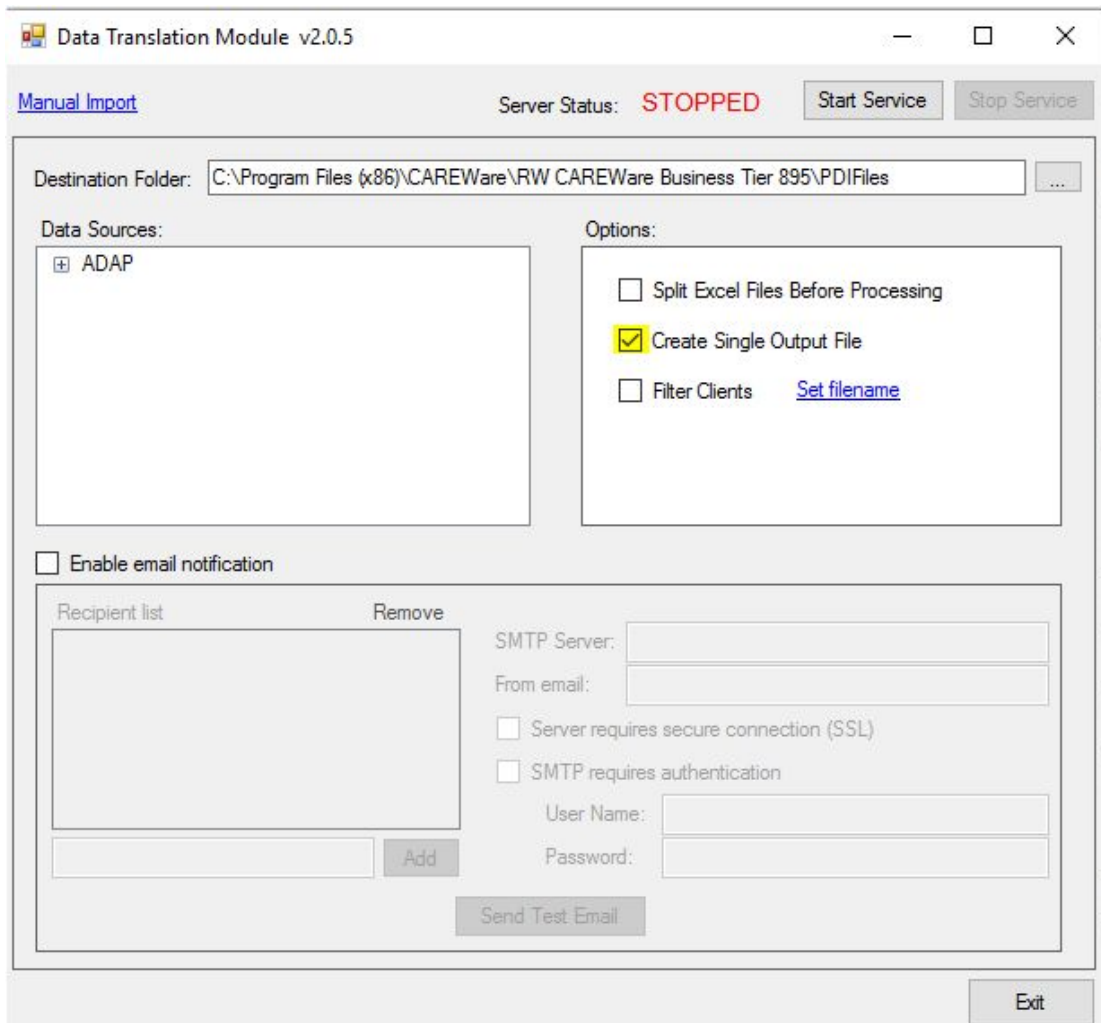
Users processing custom fields using the Data Translation Module may experience the following error:

Error on record 2: Column '*Custom Field Name Here*' does not belong to table Table.

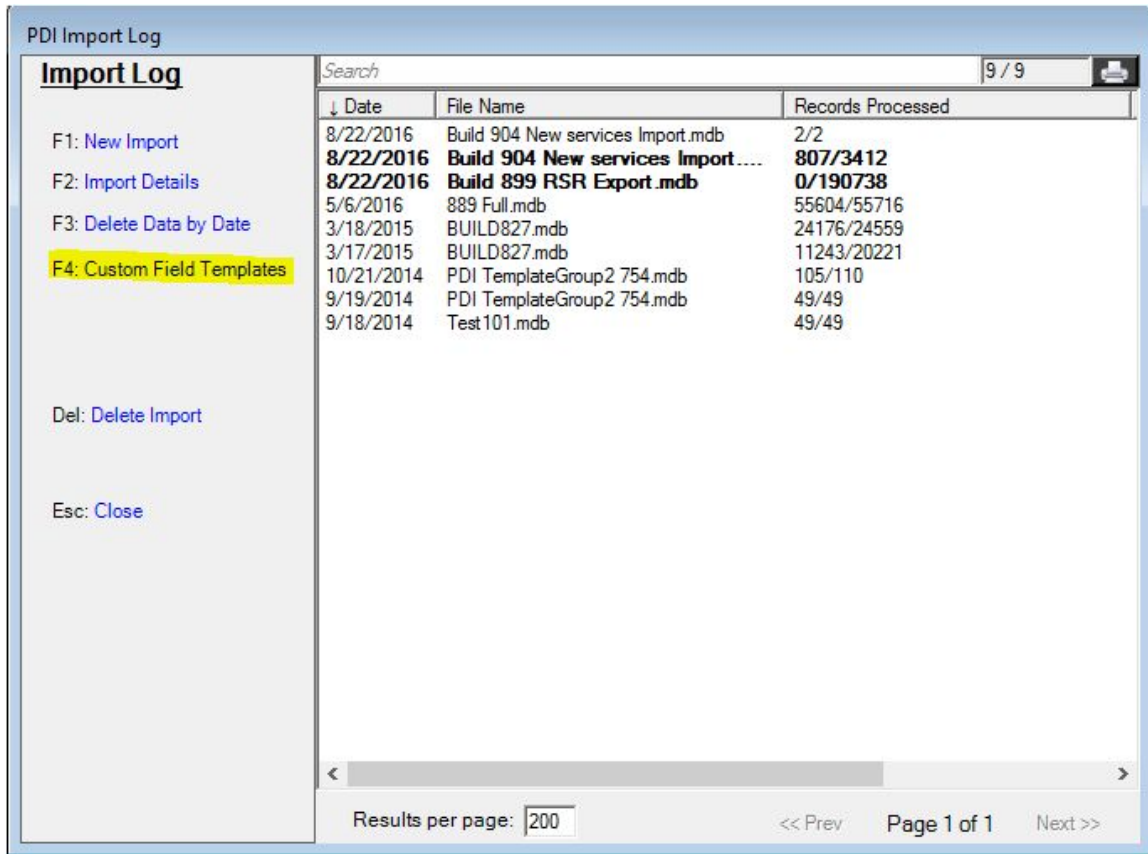
This error can be reviewed in the log file in the *Logs* folder located at: C:\Program Files (x86)\jProg\DTM\Logs by default.

The error occurs because the custom field was not a column in the PDI file. If the option *Create Single File* was checked, previously processed imports didn't include the custom field. If *Create Single File* was not checked, the PDI Template.mdb may not have the custom field columns in it, because the PDI Template.mdb file in the DTM folder is not a custom PDI template containing the custom field.

To resolve the error: Uncheck *Create Single Output file* or move the PDI files from the output folder before processing the new custom fields.



To resolve this error if Create Single Output File is unchecked: Make sure the custom PDI Template is saved in the DTM folder and the custom PDI template file in the DTM folder is called *PDI Template.mdb*.



The screenshot shows a window titled "PDI Import Log" with a sidebar on the left and a main table area. The sidebar contains menu items: "F1: New Import", "F2: Import Details", "F3: Delete Data by Date", "F4: Custom Field Templates" (highlighted in yellow), "Del: Delete Import", and "Esc: Close". The main area has a search bar with "9 / 9" and a print icon. Below is a table with columns "Date", "File Name", and "Records Processed".

↓ Date	File Name	Records Processed
8/22/2016	Build 904 New services Import.mdb	2/2
8/22/2016	Build 904 New services Import....	807/3412
8/22/2016	Build 899 RSR Export.mdb	0/190738
5/6/2016	889 Full.mdb	55604/55716
3/18/2015	BUILD827.mdb	24176/24559
3/17/2015	BUILD827.mdb	11243/20221
10/21/2014	PDI TemplateGroup2 754.mdb	105/110
9/19/2014	PDI TemplateGroup2 754.mdb	49/49
9/18/2014	Test101.mdb	49/49

At the bottom of the window, there is a "Results per page:" field set to "200", and navigation buttons: "<< Prev", "Page 1 of 1", and "Next >>".

