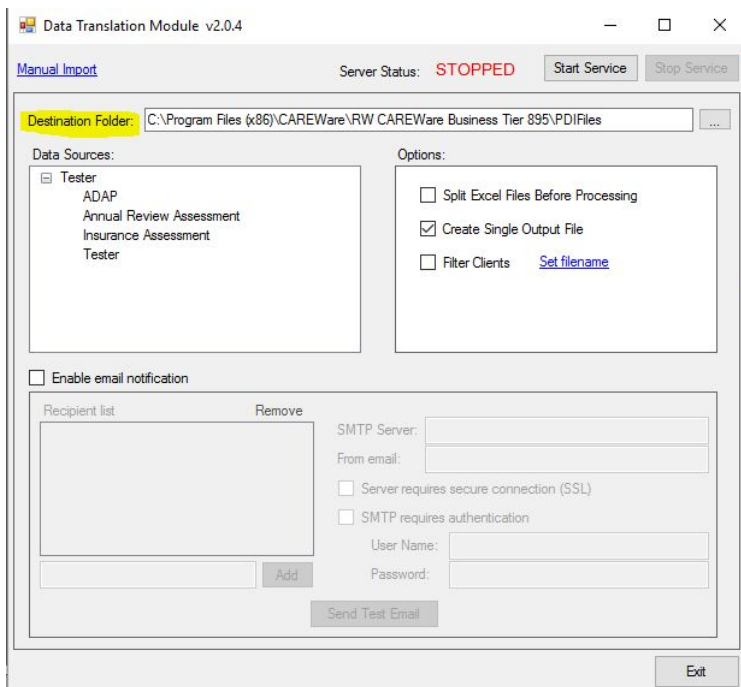


The Data Translation Module automatically processes import files and produces Provider Data Import files as long as the Data Translation Module service is started. The Destination Folder can be configured to match the PDIFiles folder, which is used for the automatic Provider Data Import process. Instructions to set up the automatic Provider Data Import process are [here](#).

- Go to *C:\Program Files (x86)\jProg\DTM*.
- Right click *Data Translation Module.exe* or the shortcut for the DTM.
- Click *Run as Administrator*.
- Click *Stop Service*.
- Click the ellipsis to browse to the PDIFiles folder. The default setting is:
C:\Program Files (x86)\CAREWare\RW CAREWare Business Tier\PDIFiles.



Once the Data Translation Module processes an incoming file, it creates a PDI file that will be imported during the scheduled task time frame.

Note: The Data Translation Module has an option to combine all import files into a single PDI file. This can help when CSV files are created for individual data elements or tables rather than as a comprehensive import. The PDI template file created by the Data Translation Module will still need all of the required data fields for a PDI import in order for the automatic import process to work correctly. [Here](#) is a link to the PDI Specifications Document, which can be used to configure import files for CAREWare.

[Here](#) are additional instructions on how to use the Data Translation Module.